



REVISION 5

CERTIFICATE No.
IECEX SIM 11.0003

60 SERIES LASER LD 60 IS

In response to
market demand!!



IP55

Operates
To
300 metres!!

NOW
IEC APPROVED

INTRINSICALLY SAFE

Explosion-proof containment not required.

Works in Methane / Air mixtures

IEC 60079.0:2004 Edition 4

Electrical apparatus for explosive gas atmospheres.

Part O: General Requirements

APPLICATIONS

- Mining
- Tunnelling
- Industrial
- Safety
- Manufacturing
- Power Boring

IEC 60079.11:2006 Edition 5

Electrical apparatus for explosive gas atmospheres.

Part 11: Equipment protection by Intrinsic safety "i"

The **LD 60 IS** laser allows accurate construction and alignment of tunnels where being driven by tunnel boring machines, drill and blast, pipe jack or conventional techniques.

The **LD 60 IS** is intrinsically safe and therefore does not require an explosion proof containment when working in gaseous environments such as methane / air mixtures.

The unit is waterproof, **IP55**, rugged and entirely constructed of stainless steel and brass.

The Laser is based on diode technology and powered through 4 x 'D' Cell batteries.

The replacement of Batteries in the Hazardous Area is controlled by an Allen Headed Grub Screw.

OPTIONS

Rubber Bumpers (Anti Static) SISA.60.001
 Metal Carry Case See rear page.
 Penta Prism A 90 Deg

SPECIFICATIONS

Length	455mm
Diameter	60mm
Weight	3.7 kg with batteries
Power supply	4 x 'D' Cell batteries (SISLD60D)
Operating time	300 hours
Class	2M
Output power	3 mW
Operating range	300 m
Beam diameter (at exit)	10 mm



STOTT INDUSTRIAL SUPPLIES
 Unit 1 / Balook Drive
 (Endeavour Close)
 BERESFIELD NSW 2322

3/12 REV5

www.stottind.com.au

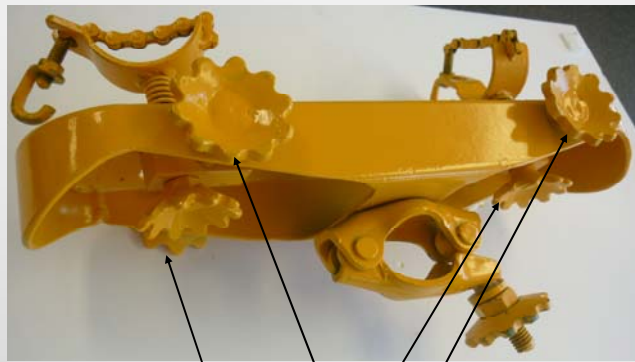
This Laser Manufactured in Australia by
MCE LASERS Melbourne

PHONE: 02 4966 8020
 FAX: 02 4966 8302
 ABN: 70 114 974 784

NEW & IMPROVED

The following changes have been incorporated into this new Laser Adjustment bracket following customer input.

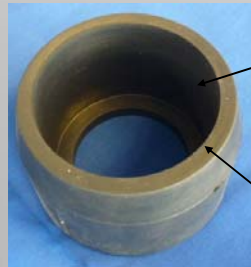
- Larger thumb wheels and new simple Laser clamping mechanisms for effortless adjustment with gloved hands
- Heavier Duty threaded rods
- Threads and slides now have better protection from debris.
- Laser Clamp chain remains attached to the frame.
- Frame ends are smooth & rounded to reduce possible injury & protect the slides.
- Lighter & Stronger construction.
- Rounded frame ends also serve as a Carry Handle designed for comfortable grip for



LASER ADJUSTMENT BRACKET

Adjustments are provided at both front and back for left / right movement & up / down movement

P/No: **SISLD60IS-BRKT**



RUBBER BUMPERS

To reduce damage risk

P/No: **SISA.60.001**

HORIZONTAL HANGER

Standard 600mm long
(no threaded nut at end)

P/No: **CLA11LF03**

Also Available:

- Various optional lengths
- Nut can be included at open end

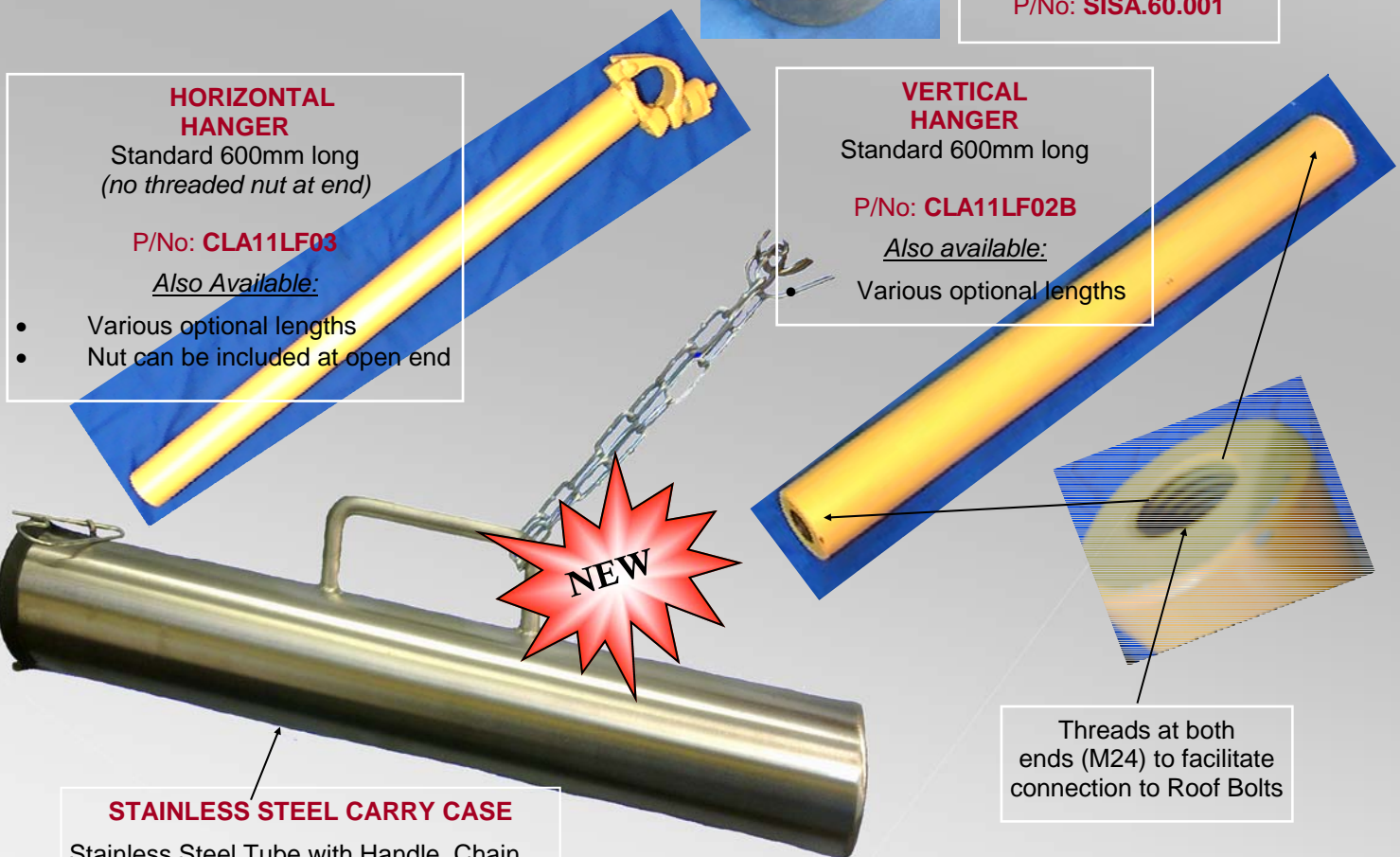
VERTICAL HANGER

Standard 600mm long

P/No: **CLA11LF02B**

Also available:

- Various optional lengths



STAINLESS STEEL CARRY CASE

Stainless Steel Tube with Handle, Chain and Pin Latched End Cover plate

P/No: **SISLD60HARDCASE**

Threads at both ends (M24) to facilitate connection to Roof Bolts

If your application needs special modifications, talk with us at Stotts about how we can assist you.